

Schools

New Sixth Form Centre for South Sefton

AA Projects has been working with Sefton LEA to create a brand new £11.8m Sixth Form Centre for the south of the Borough. We were successfully nominated in the LSC 16-19 competition process, one of the first such competitions in the country and subsequently granted 100% LSC funding. AA Projects has been instrumental in shaping the scheme both from a delivery and design perspective, as well as cost.

There are a number of sustainable aspects to the project including ground source heat pumps, biomass boilers as well as an external works scheme which enables the project to create natural areas of habitat for a variety of species with associated pathways on adjacent current wasteland and areas of open space. Construction will commence on site in February with completion by September 2009.

Residential

Residential Appointment in Bolton

The Building Surveying team has been appointed by North West property developer, Westpoint Land Ltd, as Contract Administrators and CDM Coordinators for a residential development of 21 apartments in Bolton. As part of the appointment, the Building Surveying team has advised on a party wall matter and oversaw the demolition of a service station that occupied the Brownfield site.

Commercial

North East Contract at Nissan

Nissan Motor Manufacturing (UK) Ltd has appointed AA Projects to provide Project Management support and Cost Management services on a 21,000 square metre new development at their Production Facility in Washington, Tyne & Wear. The project is to provide a new build Trim and Chassis warehouse with a development value of around £4.5m.

Commercial

New Development at Centrica

AA Projects has been commissioned by Centrica to provide Project Management, Quantity Surveying and CDM-C services on a new development at their National Distribution Centre in Leicester. The project is to build an additional storey on their office accommodation at the Distribution Centre to provide a control tower allowing 360 degree vision around the facility.

International

Renewable Energy

In Portugal, two hydropower projects are to commence construction in Spring. AA Projects has been providing Procurement and Contact Advice to an international Development company and will continue to provide project monitoring services.

For the development of six wind farms in Poland, contracts have been signed for the supply of 69 wind turbines. AA Projects undertook the lead role in contract negotiations on behalf of an international Development company. The total project development investment will be in excess of 250m Euro.

News

Construction Industry Careers Advice for Colleges

AA Projects is working alongside Elevate to promote one of the Government's Pathfinder Projects. Elevate Constructing the Future is charged with promoting the construction industry in East Lancashire and AA Projects was invited to give a presentation to the students at Pendle Vale College in Nelson.

The presentation highlighted the various craft and professional roles that are available within the construction industry and the routes available to attain the qualifications. It also summarised the shortage of craft and professions within the North West which is predicted to be in the region of 20,000 by 2011.

News

New Senior Appointment

Roy Steele has joined us and opened our new office in the Midlands. Prior to taking up his role as a Director of AA Projects, Roy was a Divisional Director at Currie & Brown in Birmingham. Roy has been a qualified professional for 30 years and has spent most of his career in project and property management. His specialty and interest is in historic buildings and the heritage sector. For the last four years Roy has been an advisor to the DCSF (formally the DfES) on the City Academies programme.

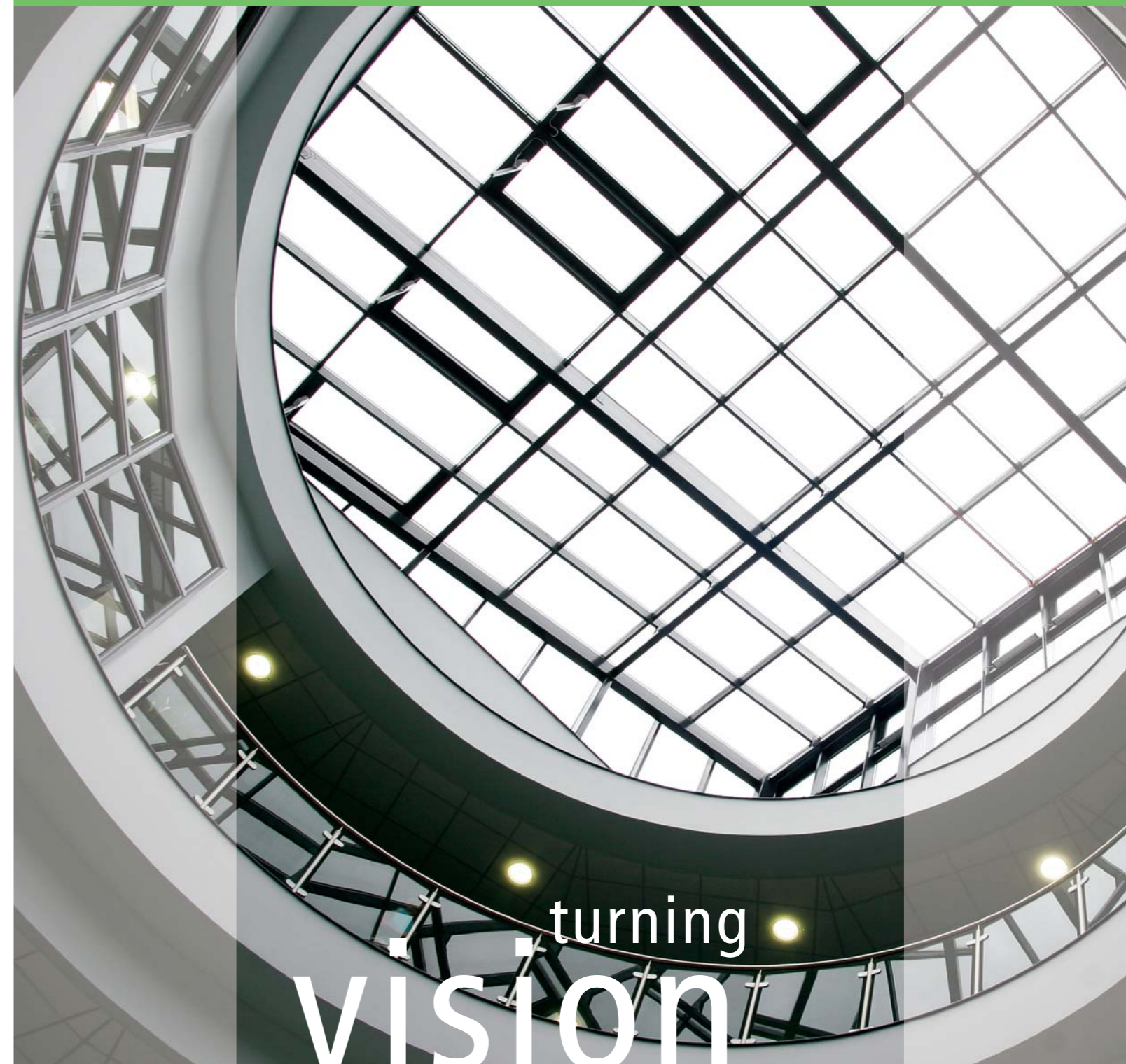
Picture Credits:

1. University of Manchester - Place Hall (Image: John McAslan + Partners)
 2. Lancaster University - Bowland North
 3. Burnley College - Proposed Sixth Form (Image: DLA Architecture)
 4. Loreto College - Chapel
 5. Accrington & Rossendale College - Coppice Centre
 6. Macclesfield Learning Zone
 7. Pendleton College - Theatre
- Front Cover: Macclesfield Learning Zone



Head Office: Jackson House Sibson Road Sale M33 7RR Tel: 0161 973 7410 Fax: 0161 973 6193

Email: info@aaprojects.co.uk www.aaprojects.co.uk



turning
vision
into
reality



AA Projects continues to expand and has recently opened an office in the Midlands and moved to new, larger Head Office premises in Manchester. In October, the company received the title 'Building Good Employer 2007' having been selected by Building Magazine as one of the Top Employers within the construction industry.



Higher Education

Framework Appointment for University of Liverpool

The Building Surveying Division has been appointed to the four year Design Framework for the University of Liverpool.

This appointment cements the previous call off relationship and Chris Thorpe, Head of Building Surveying, says: "We are looking forward to partnering with the University and supporting their in-house team. This is a key appointment which will be serviced by the team in our Liverpool office."

Higher Education

£9m Refurbishment at Lancaster University

The recently refurbished Bowland North project at Lancaster University was opened in December by the Chief Executive of HEFCE, to much acclaim. The wholesale refurbishment of an occupied building including new windows, re-roofing and all new services was completed this summer on programme, within budget to a high degree of end user satisfaction. The £9m building was delivered by AA Projects and funded by the HEFCE.



Higher Education

Two Projects Successfully Completed for University of Manchester

For the University of Manchester, AA Projects has successfully managed the completion and handover of the new building to house the School of Nursing and Institute of Health Studies. This project was completed in November 2007 to enable occupation prior to Christmas. This is the first phase of the £64m flagship University Place development which will be completed in March 2008. Also for the University of Manchester but under a separate contract, the £10m University Place Hall building was completed in July 2007, within budget and ahead of programme. This building provides accommodation for over 300 students in the heart of the University campus.



Higher / Further Education

New £82 million Campus for Burnley College & University of Central Lancashire

AA Projects is providing the Project Management, Quantity Surveying and Health and Safety expertise for a new £82m campus for Burnley College which will provide first class teaching facilities. The new campus will create the most up to date facilities for Burnley College incorporating a sixth form centre and a separate skills and adult centre. The development will also bring a University directly into Burnley as a Centre for the University of Central Lancashire. Sustainability has been a key design feature of the scheme with the central glass atrium making good use of natural light. Other energy saving features include rainwater collection and reuse. The scheme is scheduled for completion in July 2009.

Further Education

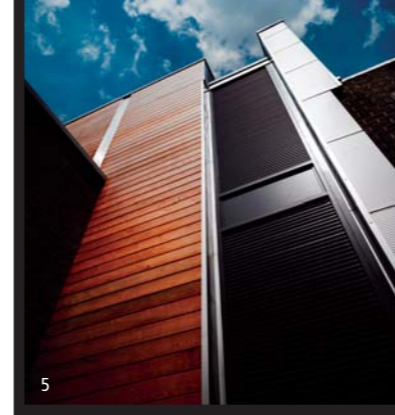
£42m Redevelopment at King George V College

King George V College, Southport has appointed AA Projects as Project Manager, Quantity Surveyor and CDM Coordinator for the £42m redevelopment of the existing campus to facilitate the regeneration of sixth form education at the College. The new buildings will accommodate 21st Century teaching, performing arts and student services facilities and will consolidate the College's estate which has become fragmented. Limited remodelling of the existing College buildings will be required and construction works are scheduled to commence in 2009 and are to be completed early 2011.

Further Education

Chapel Restoration Work at Loreto College

The Chapel at Loreto College was constructed in 1875 for the Institute of the Blessed Virgin Mary, Loreto Convent, Dublin. The project undertaken comprised of new teaching accommodation to house the College Art and Graphics Departments and provide disabled access to the Chapel. The restoration works included stain glass renovation; conservation of mosaics; stone and brickworks repairs; and re-roofing. All works were undertaken in consultation with City Planners and the Local Conservation Officer and maximised use of reclaimed materials and craft skills.



Further Education

New £15 million Campus for Accrington & Rossendale College

The Coppice Centre was officially opened for Accrington & Rossendale College in September providing outstanding new facilities for their Performance Arts & Media and Hair & Beauty Departments.

AA Projects has provided the Strategic Consultancy, Project Management, Health & Safety advice and Quantity Surveying services on the development of this first class, £15m teaching facility.

Further Education

Opening of £38m Macclesfield Learning Zone

Macclesfield's pioneering vision of education opened its doors to students in September. The £38m Macclesfield Learning Zone includes a new FE College, a new Sixth Form Centre, an Aeronautics Centre, a new High School specialising in Arts and Technology, a Special Needs School, a new joint Sports Centre, sports fields and all weather pitches, tennis club and nursery. AA Projects provided Project Management services on this flagship project that has transformed 14-19yrs education in the region.



Further Education

Recent Further Education Commissions

Mid Cheshire College has recently appointed AA Projects as Project Managers from RIBA Stage C onwards for the redevelopment of the Hartford Campus with an estimated value of £44m. This will be delivered over a phased programme during which the whole campus will be replaced. The project will be completed in 2012.

For a new £32m redevelopment, Furness College has commissioned AA Projects as Project Manager, Quantity Surveyor and CDM Coordinator. This will provide a new state of the art building housing teaching, IT and workshop facilities together with a new Learning Resource Centre and Student Services areas.

At Hartlepool College of Further Education, we have been commissioned as Project Manager, Quantity Surveyor and CDM Coordinator for a new build College on an existing site and acquired land adjacent Stockton Road in Hartlepool. The project has an estimated development value of £52m.

At Cardinal Newman College, we were formally appointed in December 2007 as Project Managers & Employers Agent for the final Phase of the College's redevelopment of its Lark Hill Campus, from RIBA Stage D onwards. The estimated £21m project will be delivered over a phased programme during which the majority of the campus will be replaced with completion in 2011.

AA Projects are developing an expertise in creating Property Strategies for Specialist Colleges, with appointments at Beaumont College and Bridge College.

Further Education

Opening Night at Pendleton College

The curtains were drawn back at Pendleton College's new, state of the art theatre for their VIP evening of Les Miserables. Having taken receipt of the keys to their new building this summer, ahead of programme and comfortably within budget, the College opened to the public with a VIP evening at the theatre.

The fantastic new facilities delivered by AA Projects support the College's Beacon status and strong reputation in Performing Arts. The £9.5m project was funded by the Learning & Skills Council (LSC).



Further Education

Brian Iddon MP Cuts the Turf for Cutting Edge Campus

Bolton South MP Brian Iddon performed the official turf-cutting ceremony in June to celebrate the start of construction of the £14 million new Farnworth Sixth Form College and 14-19yrs Centre, a joint venture between Bolton Sixth Form College, local 11-16yrs schools and Bolton Community College.

AA Projects is providing the Project Management, Employer's Agent, Quantity Surveying and CDM-C expertise on this new Centre that will transform opportunities for students in the south of Bolton. AA Projects developed the College's successful Capital Application to the LSC, assisting with the In Principle and Detailed Funding Applications.

Schools

Design & Technical Advisors on Litherland High School Pathfinder Project

AA Projects has recently been appointed by Sefton Metropolitan Borough Council as Design & Technical Advisors on their Litherland High School Pathfinder Project prior to the Council engaging in a full Building Schools for the Future (BSF) programme.

The team has completed initial option appraisal and feasibility works to enable identification of a preferred option. This will be developed through the Outline Business Case prior to engagement, with the Partnership for Schools Contractor Framework early in 2008.